



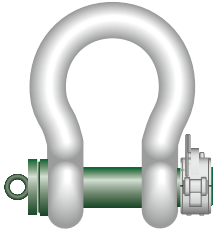
## LINGATEC SOLUÇÃO EM MOVIMENTAÇÃO DE CARGAS LTDA

Rua Buri, 149 - Laranjeiras – CAIEIRAS/SP – CEP: 07739-600  
11-4441-5420 - vendas@lingatec.com.br - www.lingatec.com.br

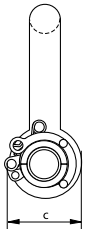
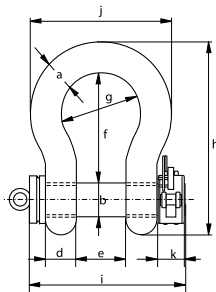


### Green Pin® Locking Clamp ROV Shackle

#### Release ROV shackle (grade 8) with locking clamp



P-5365



- **Material:** bow and pin alloy steel, grade 8, Polar quality, quenched and tempered
- **Safety Factor:** MBL equals 6 x WLL  
for shackles with WLL 120 t and up the MBL equals 5x WLL
- **Finish:** body painted white, pin painted green
- **Temperature Range:** -60°C up to +200°C
- **Certification:** 2.1 2.2 3.1 MTC<sup>a</sup> MTC<sup>b</sup> \* LROS \* CE
- **Note:** supplied without wires; design your own wiring plan

working load limit	diameter bow	diameter pin	diameter eye	width eye	width inside	length inside	width bow	length	length bolt	width	width locking clamp	weight each
t	a mm	b mm	c mm	d mm	e mm	f mm	g mm	h mm	i mm	j mm	k mm	kg
6.5	22	25	52	22	36	83	58	164	131	102	31	2.27
9.5	28	32	66	28	47	108	75	200	166	131	31	4.25
12	32	35	72	32	51	115	83	213	184	147	31	5.36
17	38	42	88	38	60	146	99	266	206	175	40	9.27
25	45	50	103	45	74	178	126	309	243	216	40	14.62
35	50	57	116	50	83	197	138	350	269	238	40	20.75
42.5	57	65	130	57	95	222	160	377	301	274	40	28.33
55	65	70	145	65	105	260	180	440	329	310	40	41
85	75	83	162	75	127	329	190	527	375	340	40	61
120	95	95	208	91	147	400	238	647	440	428	60	110
150	105	108	238	102	169	410	275	688	490	485	60	160
200	120	130	279	113	179	513	290	838	520	530	60	235
250	130	140	299	118	205	554	305	904	560	565	60	285

In inch

working load limit	diameter bow	diameter pin	diameter eye	width eye	width inside	length inside	width bow	length	length bolt	width	width locking clamp	weight each
t	a inch	b inch	c inch	d inch	e inch	f inch	g inch	h inch	i inch	j inch	k inch	lbs
6.5	$\frac{7}{8}$	1	$2\frac{1}{32}$	$\frac{7}{8}$	$1\frac{7}{16}$	$3\frac{9}{32}$	$2\frac{9}{32}$	$6\frac{7}{16}$	$5\frac{5}{32}$	4	$1\frac{7}{32}$	5.00
9.5	$1\frac{1}{8}$	$1\frac{1}{4}$	$2\frac{19}{32}$	$1\frac{1}{8}$	$1\frac{7}{8}$	$4\frac{1}{4}$	$2\frac{15}{16}$	$7\frac{7}{8}$	$6\frac{17}{32}$	$5\frac{5}{32}$	$1\frac{7}{32}$	9.37
12	$1\frac{1}{4}$	$1\frac{3}{8}$	$2\frac{13}{16}$	$1\frac{9}{32}$	2	$4\frac{17}{32}$	$3\frac{9}{32}$	$8\frac{3}{8}$	$7\frac{1}{4}$	$5\frac{25}{32}$	$1\frac{7}{32}$	11.82
17	$1\frac{1}{2}$	$1\frac{5}{8}$	$3\frac{1}{2}$	$1\frac{17}{32}$	$2\frac{11}{32}$	$5\frac{3}{4}$	$3\frac{29}{32}$	$10\frac{1}{2}$	$8\frac{1}{8}$	$6\frac{7}{8}$	$1\frac{9}{16}$	20.44
25	$1\frac{3}{4}$	2	$4\frac{1}{32}$	$1\frac{25}{32}$	$2\frac{29}{32}$	7	$4\frac{15}{16}$	$12\frac{5}{32}$	$9\frac{19}{32}$	$8\frac{17}{32}$	$1\frac{9}{16}$	32.23
35	2	$2\frac{1}{4}$	$4\frac{9}{16}$	$1\frac{31}{32}$	$3\frac{9}{32}$	$7\frac{3}{4}$	$5\frac{7}{16}$	$13\frac{25}{32}$	$10\frac{19}{32}$	$9\frac{3}{8}$	$1\frac{9}{16}$	45.75
42.5	$2\frac{1}{4}$	$2\frac{9}{16}$	$5\frac{1}{8}$	$2\frac{1}{4}$	$3\frac{3}{4}$	$8\frac{3}{4}$	$6\frac{9}{32}$	$14\frac{13}{16}$	$11\frac{7}{8}$	$10\frac{25}{32}$	$1\frac{9}{16}$	62.5
55	$2\frac{1}{2}$	$2\frac{3}{4}$	$5\frac{23}{32}$	$2\frac{9}{16}$	$4\frac{1}{8}$	$10\frac{1}{4}$	$7\frac{3}{32}$	$17\frac{11}{32}$	$12\frac{15}{16}$	$12\frac{3}{16}$	$1\frac{9}{16}$	90.4
85	3	$3\frac{1}{4}$	$6\frac{11}{32}$	$2\frac{15}{16}$	5	$12\frac{15}{16}$	$7\frac{1}{2}$	$20\frac{3}{4}$	$14\frac{3}{4}$	$13\frac{3}{8}$	$1\frac{9}{16}$	134.5
120	$3\frac{3}{4}$	$3\frac{3}{4}$	$8\frac{3}{16}$	$3\frac{19}{32}$	$5\frac{25}{32}$	$15\frac{3}{4}$	$9\frac{3}{8}$	$25\frac{1}{2}$	$17\frac{11}{32}$	$16\frac{7}{8}$	$2\frac{11}{32}$	243
150	$4\frac{1}{8}$	$4\frac{1}{4}$	$9\frac{3}{8}$	4	$6\frac{5}{8}$	$16\frac{5}{32}$	$10\frac{13}{16}$	$27\frac{3}{32}$	$19\frac{5}{16}$	$19\frac{1}{8}$	$2\frac{11}{32}$	353
200	$4\frac{23}{32}$	$5\frac{1}{8}$	11	$4\frac{7}{16}$	$7\frac{1}{32}$	$20\frac{3}{16}$	$11\frac{7}{16}$	33	$20\frac{1}{2}$	$20\frac{7}{8}$	$2\frac{11}{32}$	518
250	$5\frac{1}{8}$	$5\frac{1}{2}$	$11\frac{25}{32}$	$4\frac{5}{8}$	$8\frac{3}{32}$	$21\frac{13}{16}$	12	$35\frac{19}{32}$	$22\frac{1}{32}$	$22\frac{1}{4}$	$2\frac{11}{32}$	628

\* For shackles  $\geq$  WLL 150 t