

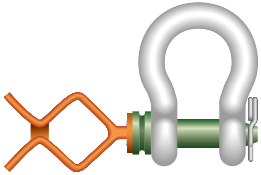


## LINGATEC SOLUÇÃO EM MOVIMENTAÇÃO DE CARGAS LTDA

Rua Buri, 149 - Laranjeiras – CAIEIRAS/SP – CEP: 07739-600  
11-4441-5420 - vendas@lingatec.com.br - www.lingatec.com.br

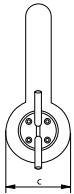
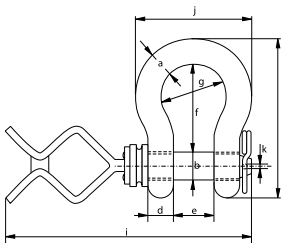
### Green Pin® Tapered Pin ROV Shackle F

Release & retrieve ROV shackle (grade 8) with tapered screw pin and Fishtail handle



- **Material:** bow and pin alloy steel, grade 8, polar quality, quenched and tempered
- **Safety factor:** MBL equals 5 x WLL
- **Finish:** body painted white, pin painted green
- **Temperature Range:** -60°C up to +200°C
- **Certification:** 2.1 2.2 3.1 MTC® CE
- **Note:** supplied without wires; design your own wiring plan

P-5361F



working load limit	diameter bow	diameter pin	diameter eye	width eye	width inside	length inside	width bow	length	length bolt	width	diameter	weight each
t	a mm	b mm	c mm	d mm	e mm	f mm	g mm	h mm	i mm	j mm	k mm	kg
6.5	22	25	52	22	36	83	58	144	419	102	3.5	1.50
9.5	28	32	66	28	47	108	75	185	455	131	5.5	3.16
12	32	35	72	32	51	115	83	201	467	147	6.5	4.31
17	38	42	88	38	60	146	99	249	491	175	8.5	7.43
25	45	50	103	45	74	178	126	300	538	216	8.5	12.84
35	50	57	111	50	83	197	138	331	558	238	8.5	18.15
42.5	57	65	130	57	95	222	160	377	590	274	7.5	26.29
55	65	70	145	65	105	260	180	433	619	310	7.5	37.60

In inch

working load limit	diameter bow	diameter pin	diameter eye	width eye	width inside	length inside	width bow	length	length bolt	width	diameter	weight each
t	a inch	b inch	c inch	d inch	e inch	f inch	g inch	h inch	i inch	j inch	k inch	lbs
6.5	$\frac{7}{8}$	1	$2\frac{1}{16}$	$\frac{7}{8}$	$1\frac{7}{16}$	$3\frac{9}{32}$	$2\frac{9}{32}$	$5\frac{21}{32}$	$16\frac{1}{2}$	$4\frac{1}{32}$	$\frac{1}{8}$	3.31
9.5	$1\frac{1}{8}$	$1\frac{1}{4}$	$2\frac{19}{32}$	$1\frac{1}{8}$	$1\frac{7}{8}$	$4\frac{1}{4}$	$2\frac{15}{16}$	$7\frac{9}{32}$	$17\frac{29}{32}$	$5\frac{5}{32}$	$\frac{7}{32}$	6.97
12	$1\frac{1}{4}$	$1\frac{3}{8}$	$2\frac{27}{32}$	$1\frac{9}{32}$	2	$4\frac{17}{32}$	$3\frac{9}{32}$	$7\frac{29}{32}$	$18\frac{3}{8}$	$5\frac{25}{32}$	$\frac{1}{4}$	9.49
17	$1\frac{1}{2}$	$1\frac{5}{8}$	$3\frac{15}{32}$	$1\frac{17}{32}$	$2\frac{11}{32}$	$5\frac{3}{4}$	$3\frac{29}{32}$	$9\frac{13}{16}$	$19\frac{11}{32}$	$6\frac{7}{8}$	$\frac{11}{32}$	16.37
25	$1\frac{3}{4}$	2	$4\frac{1}{16}$	$1\frac{25}{32}$	$2\frac{29}{32}$	7	$4\frac{15}{16}$	$11\frac{13}{16}$	$21\frac{3}{16}$	$8\frac{1}{2}$	$\frac{11}{32}$	28.31
35	2	$2\frac{1}{4}$	$4\frac{3}{8}$	$1\frac{31}{32}$	$3\frac{9}{32}$	$7\frac{3}{4}$	$5\frac{7}{16}$	$13\frac{1}{32}$	$21\frac{31}{32}$	$9\frac{3}{8}$	$\frac{11}{32}$	40.01
42.5	$2\frac{1}{4}$	$2\frac{9}{16}$	$5\frac{1}{8}$	$2\frac{1}{4}$	$3\frac{3}{4}$	$8\frac{3}{4}$	$6\frac{9}{32}$	$14\frac{27}{32}$	$23\frac{7}{32}$	$10\frac{25}{32}$	$\frac{9}{32}$	57.96
55	$2\frac{1}{2}$	$2\frac{3}{4}$	$5\frac{23}{32}$	$2\frac{9}{16}$	$4\frac{1}{8}$	$10\frac{1}{4}$	$7\frac{9}{32}$	$17\frac{1}{16}$	$24\frac{3}{8}$	$12\frac{7}{32}$	$\frac{9}{32}$	82.89