



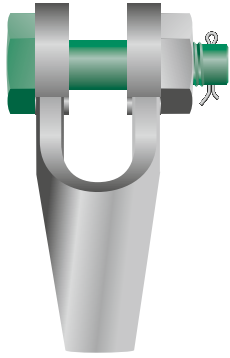
LINGATEC SOLUÇÃO EM MOVIMENTAÇÃO DE CARGAS LTDA

Rua Buri, 149 - Laranjeiras – CAIEIRAS/SP – CEP: 07739-600
11-4441-5420 - vendas@lingatec.com.br - www.lingatec.com.br

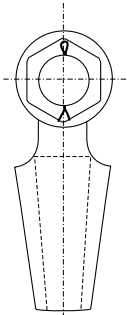
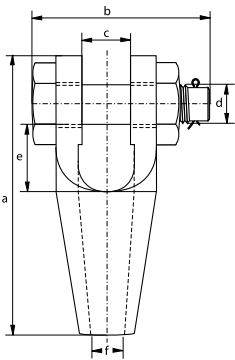


Green Pin® Open Spelter Socket BN

Open spelter socket with safety bolt



G-6422



- **Material:** high tensile steel
- **Finish:** hot dipped galvanized
- **Temperature Range:** -20°C up to +200°C
- **Certification:** 2.1 2.2 3.1 CE

number	minimum breaking load	diameter wire rope	length	width	width inside	diameter pin	length inside	opening	weight each
			a mm	b mm	c mm	d mm	e mm	f mm	kg
196	8	6 - 7	109	69	19	16	33	9	0.4
197	12	8 - 10	124	83	21	20	35	12	0.8
198	20	11 - 13	143	101	26	25	37	15	1.3
199	25	14 - 16	172	124	33	30	49	18	2.3
100	40	18 - 19	205	138	38	35	58	21	3.7
104	55	20 - 22	235	148	44	41	68	24	4.6
108	75	23 - 26	275	176	51	50	76	28	9.7
111	90	27 - 30	306	193	57	57	85	32	13.6
115	125	31 - 36	338	210	63	63	96	38	16
118	150	37 - 39	394	230	76	70	127	41	26.9
120	170	40 - 42	418	244	76	77	126	44	32

In inch

number	minimum breaking load	diameter wire rope	length	width	width inside	diameter pin	length inside	opening	weight each
			a inch	b inch	c inch	d inch	e inch	f inch	lbs
196	8	1/4	4 9/32	2 23/32	3/4	5/8	1 5/16	11/32	0.88
197	12	3/8	4 7/8	3 9/32	13/16	25/32	1 3/8	15/32	1.76
198	20	7/16 - 1/2	5 5/8	3 31/32	1 1/32	1	1 1/2	19/32	2.87
199	25	9/16 - 5/8	6 3/4	4 7/8	1 5/16	1 3/16	1 15/16	23/32	5.07
100	40	3/4	8 3/32	5 7/16	1 17/32	1 3/8	2 9/32	13/16	8.16
104	55	7/8	9 9/32	5 13/16	1 3/4	1 5/8	2 11/16	15/16	10.14
108	75	1	10 13/16	6 29/32	2	1 31/32	3	1 1/8	21.38
111	90	1 1/8	12 1/32	7 19/32	2 1/4	2 1/4	3 11/32	1 9/32	30.0
115	125	1 1/4 - 1 3/8	13 5/16	8 9/32	2 1/2	2 1/2	3 25/32	1 17/32	35.3
118	150	1 1/2	15 17/32	9 3/32	3	2 3/4	5	1 5/8	59.3
120	170	1 5/8	16 1/2	9 5/8	3	3 1/32	4 15/16	1 3/4	70.5