



**LINGATEC SOLUÇÃO EM MOVIMENTAÇÃO DE CARGAS LTDA**

Rua Buri, 149 - Laranjeiras – CAIEIRAS/SP – CEP: 07739-600

11-4441-5420 - vendas@lingatec.com.br - www.lingatec.com.br

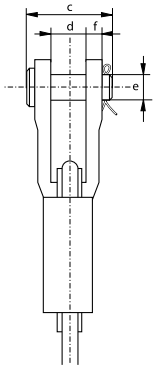
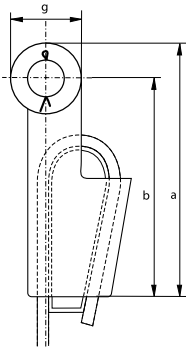


**Green Pin® Open Wedge Socket CP**

Open wedge socket with cotter pin



G-6413



- **Material:** high tensile steel
- **Standard:** generally to EN 13411-6
- **Finish:** hot dipped galvanized
- **Temperature Range:** -20°C up to +200°C
- **Certification:** 2.1 2.2 3.1 CE

number	minimum breaking load	diameter wire rope	length	length to center pin	width	width inside	diameter pin	thickness side plates	diameter eye	weight each
	t	mm	a mm	b mm	c mm	d mm	e mm	f mm	g mm	kg
0.25	8	7 - 8	128	110	51	18	16	9	36	0.8
0.5	12	9 - 10	165	142	62	20.5	21	11	46	1.5
1	20	11 - 13	175	146	66	25	25	12	57	2.4
2	25	14 - 16	211	176	82	31	30	15	70	4
3	40	18 - 19	252	212	95	38	35	16	80	7.4
4	55	20 - 22	288	240	110	44	41	19	95	11
5	75	24 - 26	329	274	130	51	51	22	110	16
6	90	27 - 29	375	310	144	57	57	25	130	22
7	110	30 - 32	423	350	155	63	64	28	146	31
8	125	34 - 36	474	400	163	69	64	28	148	39
9	150	37 - 39	527	450	178	76	70	30	153	48
10	170	40 - 42	580	500	187	76	76	33	160	64
11	225	43 - 48	650	550	226	89	89	39	186	96
12	280	49 - 52	745	640	240	101	95	46	194	130
13	360	54 - 58	785	660	275	114	108	54	230	180
14	425	60 - 68	970	835	300	127	121	60	250	275
15	460	72 - 76	1150	1000	355	146	133	76	270	440
16	625	81 - 86	1252	1100	375	159	140	79	300	510

In inch

number	minimum breaking load	diameter wire rope	length	length to center pin	width	width inside	diameter pin	thickness side plates	diameter eye	weight each
	t	inch	a inch	b inch	c inch	d inch	e inch	f inch	g inch	lbs
0.25	8	5/16	5 1/32	4 5/16	2	23/32	5/8	11/32	1 7/16	1.76
0.5	12	3/8	6 1/2	5 19/32	2 7/16	13/16	13/16	7/16	1 13/16	3.31
1	20	1/2	6 7/8	5 3/4	2 19/32	1	1	15/32	2 1/4	5.29
2	25	5/8	8 5/16	6 29/32	3 1/4	1 1/4	1 3/16	19/32	2 3/4	8.82
3	40	3/4	9 15/16	8 11/32	3 3/4	1 17/32	1 3/8	5/8	3 5/32	16.31
4	55	7/8	11 11/32	9 1/2	4 5/16	1 3/4	1 5/8	3/4	3 3/4	24.3
5	75	1	12 15/16	10 25/32	5 1/8	2	2	7/8	4 5/16	35.3
6	90	1 1/8	14 3/4	12 3/16	5 11/16	2 1/4	2 1/4	1	5 1/8	48.5
7	110	1 1/4	16 11/16	13 25/32	6 3/32	2 1/2	2 17/32	1 1/8	5 3/4	68.3
8	125	1 3/8	18 11/16	15 3/4	6 3/8	2 23/32	2 17/32	1 1/8	5 13/16	86.0
9	150	1 1/2	20 3/4	17 3/4	7	3	2 3/4	1 3/16	6	105.8
10	170	1 5/8	22 13/16	19 23/32	7 11/32	3	3	1 5/16	6 9/32	141.1
11	225	1 3/4 - 1 7/8	25 19/32	21 11/16	8 29/32	3 17/32	3 17/32	1 9/16	7 5/16	212
12	280	2	29 5/16	25 3/16	9 1/2	3 31/32	3 3/4	1 13/16	7 5/8	287
13	360	2 1/4	30 7/8	25 31/32	10 13/16	4 1/2	4 1/4	2 1/8	9 3/32	397
14	425	2 1/2	38 5/32	32 7/8	11 13/16	5	4 3/4	2 11/32	9 7/8	606
15	460	3	45 9/32	39 3/8	13 31/32	5 3/4	5 1/4	3	10 5/8	970
16	625	3 1/4 - 3 3/8	49 5/16	43 5/16	14 3/4	6 1/4	5 17/32	3 1/8	11 13/16	1124