



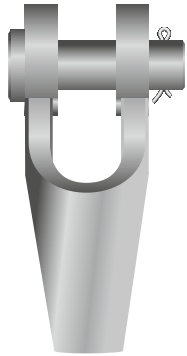
**LINGATEC SOLUÇÃO EM MOVIMENTAÇÃO DE CARGAS LTDA**

Rua Buri, 149 - Laranjeiras – CAIEIRAS/SP – CEP: 07739-600  
11-4441-5420 - vendas@lingatec.com.br - www.lingatec.com.br

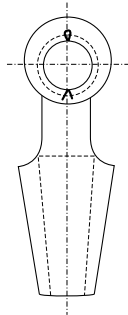
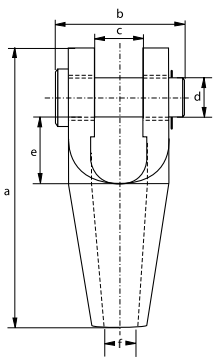


**Green Pin® Open Spelter Socket CP**

Open spelter socket with cotter pin



G-6412



- **Material:** high tensile steel
- **Finish:** hot dipped galvanized
- **Temperature Range:** -20°C up to +200°C
- **Certification:** 2.1 2.2 3.1 CE

number	minimum breaking load	diameter wire rope	length	width	width inside	diameter pin	length inside	opening	weight each
	t	mm	a mm	b mm	c mm	d mm	e mm	f mm	kg
196	8	6 - 7	109	51	19	16	33	9	0.4
197	12	8 - 10	124	62	21	21	34	12	0.7
198	20	11 - 13	143	66	26	25	37	15	1
199	25	14 - 16	172	82	33	30	49	18	1.8
100	40	18 - 19	205	95	38	35	58	21	3
104	55	20 - 22	235	110	44	41	68	24	4.6
108	75	23 - 26	275	130	51	51	75	28	8
111	90	27 - 30	306	144	57	57	85	32	11
115	125	31 - 36	338	155	63	64	95	38	16
118	150	37 - 39	394	178	76	70	127	41	22
120	170	40 - 42	418	187	76	76	127	44	27
125	225	43 - 48	468	213	89	89	134	51	41
128	280	49 - 54	552	240	101	95	181	57	64
130	360	55 - 60	598	270	113	108	196	63	88
132	425	61 - 68	654	303	127	121	213	73	125
135	460	69 - 75	696	349	133	127	216	79	155
138	560	76 - 80	737	371	146	133	220	86	187
140	625	81 - 86	788	391	159	140	228	92	230
142	720	87 - 93	852	411	171	152	242	99	265
144	875	94 - 102	914	447	191	178	254	108	400
146	1200	108 - 115	1160	489	206	193	369	125	660

In inch

number	minimum breaking load	diameter wire rope	length	width	width inside	diameter pin	length inside	opening	weight each
	t	inch	a inch	b inch	c inch	d inch	e inch	f inch	lbs
196	8	1/4	4 9/32	2	3/4	5/8	1 5/16	11/32	0.88
197	12	3/8	4 7/8	2 7/16	13/16	13/16	1 11/32	15/32	1.54
198	20	7/16 - 1/2	5 5/8	2 19/32	1 1/32	1	1 1/2	19/32	2.20
199	25	9/16 - 5/8	6 3/4	3 1/4	1 5/16	1 3/16	1 15/16	23/32	3.97
100	40	3/4	8 3/32	3 3/4	1 17/32	1 3/8	2 9/32	13/16	6.61
104	55	7/8	9 9/32	4 5/16	1 3/4	1 5/8	2 11/16	15/16	10.14
108	75	1	10 13/16	5 1/8	2	2	2 15/16	1 1/8	17.64
111	90	1 1/8	12 1/32	5 11/16	2 1/4	2 1/4	3 11/32	1 9/32	24.3
115	125	1 1/4 - 1 3/8	13 5/16	6 3/32	2 1/2	2 17/32	3 3/4	1 17/32	35.3
118	150	1 1/2	15 17/32	7	3	2 3/4	5	1 5/8	48.5
120	170	1 5/8	16 1/2	7 11/32	3	3	5	1 3/4	59.5
125	225	1 3/4 - 1 7/8	18 7/16	8 3/8	3 17/32	3 17/32	5 9/32	2	90.4
128	280	2 - 2 1/8	21 3/4	9 1/2	3 31/32	3 3/4	7 1/8	2 1/4	141.1
130	360	2 1/4 - 2 3/8	23 9/16	10 5/8	4 7/16	4 1/4	7 23/32	2 1/2	194
132	425	2 1/2 - 2 5/8	25 3/4	11 15/16	5	4 3/4	8 3/8	2 7/8	276
135	460	2 3/4 - 2 7/8	27 3/8	13 3/4	5 1/4	5	8 17/32	3 1/8	342
138	560	3 - 3 1/8	29	14 19/32	5 3/4	5 1/4	8 11/16	3 3/8	412
140	625	3 1/4 - 3 3/8	31	15 3/8	6 1/4	5 17/32	9	3 5/8	507
142	720	3 1/2 - 3 5/8	33 9/16	16 3/16	6 23/32	5 31/32	9 9/16	3 29/32	584
144	875	3 3/4 - 4	35 31/32	17 5/8	7 17/32	7	10	4 1/4	882
146	1200	4 1/4 - 4 1/2	45 11/16	19 9/32	8 1/8	7 19/32	14 17/32	4 29/32	1455