



LINGATEC SOLUÇÃO EM MOVIMENTAÇÃO DE CARGAS LTDA

Rua Buri, 149 - Laranjeiras – CAIEIRAS/SP – CEP: 07739-600
11-4441-5420 - vendas@lingatec.com.br - www.lingatec.com.br

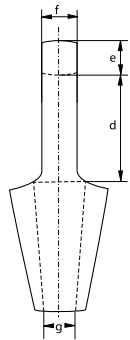
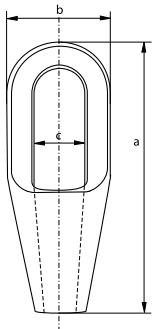


Green Pin® Closed Spelter Socket

- **Material:** high tensile steel
- **Finish:** hot dipped galvanized
- **Temperature Range:** -20°C up to +200°C
- **Certification:** 2.1 2.2 3.1 CE



G-6411



number	minimum breaking load	diameter wire rope	length	width	width inside bow	length inside bow	thickness bow	thickness bow	opening	weight each
	t	mm	a mm	b mm	c mm	d mm	e mm	f mm	g mm	kg
296	8	6 - 7	101	37	22	40	11	13	9	0.3
297	12	8 - 10	119	43	25	48	14	17.5	12	0.5
298	20	11 - 13	140	52	30	58	18	23.5	15	0.75
299	25	14 - 16	162	68	37	66	21	26	17.5	1.5
200	40	18 - 19	194	76	42	78	27	32	21.5	2.4
201	55	20 - 22	224	92	47	90	33	38	24	3.6
204	75	23 - 26	253	104	57	103	36	44	28	5.8
207	90	27 - 30	282	114	63	116	39	51	32	7
212	125	31 - 36	312	127	70	130	43	57	38	10.5
215	150	37 - 39	358	136	79	155	51	63	41	13
217	170	40 - 42	390	146	83	171	54	70	44	17
219	225	43 - 48	443	171	93	198	55	76	51	26
222	280	49 - 54	502	193	100	224	62	82	57	37.5
224	360	55 - 60	548	216	112	247	73	92	63	50
226	425	61 - 68	597	241	140	270	79	102	73	65
227	460	69 - 75	644	273	159	286	79	124	79	94
228	560	76 - 80	686	292	171	298	83	133	86	115
229	625	81 - 86	743	311	184	311	102	146	92	145
230	720	87 - 93	788	330	197	330	102	159	99	168
231	875	94 - 102	845	362	216	356	108	178	108	210
233	1200	108 - 115	1000	405	235	425	125	190	125	330
240	1300	120 - 130	1150	450	260	525	125	200	143	500

In inch

number	minimum breaking load	diameter wire rope	length	width	width inside bow	length inside bow	thickness bow	thickness bow	opening	weight each
	t	inch	a inch	b inch	c inch	d inch	e inch	f inch	g inch	lbs
296	8	1/4	3 31/32	1 1/2	7/8	1 19/32	7/16	1/2	11/32	0.66
297	12	3/8	4 11/16	1 23/32	1	1 29/32	9/16	11/16	15/32	1.10
298	20	7/16 - 1/2	5 17/32	2 1/32	1 3/16	2 9/32	23/32	15/16	19/32	1.54
299	25	9/16 - 5/8	6 11/32	2 11/16	1 1/2	2 19/32	13/16	1 1/32	11/16	3.31
200	40	3/4	7 5/8	3	1 11/16	3 3/32	1 3/32	1 9/32	27/32	5.29
201	55	7/8	8 13/16	3 5/8	1 7/8	3 9/16	1 5/16	1 17/32	15/16	7.94
204	75	1	9 31/32	4 3/32	2 1/4	4 1/32	1 7/16	1 3/4	1 1/8	12.79
207	90	1 1/8	11 1/8	4 1/2	2 1/2	4 9/16	1 9/16	2	1 9/32	15.43
212	125	1 1/4 - 1 3/8	12 9/32	5	2 3/4	5 1/8	1 23/32	2 1/4	1 17/32	23.1
215	150	1 1/2	14 3/32	5 11/32	3 1/8	6 3/32	2	2 1/2	1 5/8	28.7
217	170	1 5/8	15 11/32	5 3/4	3 9/32	6 23/32	2 1/8	2 3/4	1 3/4	37.5
219	225	1 3/4 - 1 7/8	17 1/2	6 23/32	3 11/16	7 25/32	2 5/32	3	2	57.3
222	280	2 - 2 1/8	19 25/32	7 19/32	3 15/16	8 13/16	2 7/16	3 1/4	2 1/4	82.7
224	360	2 1/4 - 2 3/8	21 19/32	8 17/32	4 3/8	9 3/4	2 7/8	3 5/8	2 1/2	110.2
226	425	2 1/2 - 2 5/8	23 17/32	9 17/32	5 17/32	10 5/8	3 1/8	4	2 7/8	143.3
227	460	2 3/4 - 2 7/8	25 11/32	10 3/4	6 1/4	11 9/32	3 1/8	4 7/8	3 1/8	207.2
228	560	3 - 3 1/8	27	11 17/32	6 23/32	11 3/4	3 9/32	5 1/4	3 3/8	254
229	625	3 1/4 - 3 3/8	29 1/4	12 1/4	7 1/4	12 1/4	4	5 3/4	3 5/8	320
230	720	3 1/2 - 3 5/8	31	13	7 3/4	13	4	6 1/4	3 29/32	370
231	875	3 3/4 - 4	33 9/32	14 1/4	8 17/32	14	4 1/4	7	4 1/4	463
233	1200	4 1/4 - 4 1/2	39 3/8	15 15/16	9 9/32	16 3/4	4 29/32	7 1/2	4 29/32	728
240	1300	4 3/4 - 5	45 9/32	17 3/4	10 1/4	20 11/16	4 29/32	7 7/8	5 5/8	1102